



RMC200 Cables

ORDERING INFORMATION

Pigtail cables provide a compact, convenient option for RMC200 modules. These cables are for short distances between the RMC200 and terminal blocks within the same cabinet. For long cable runs, use cables with lower resistance and better shielding.

Cable Assemblies

Each part number denotes a single cable assembly. Each RMC200 module requires two cable assemblies—one per terminal block. Each cable assembly consists of:

- Terminal block connector
- One or more color-coded cables, all wired to the single terminal block connector
- Pigtail ends

Part Number	For Module	For Terminal Block	Number required per module	Length
R2-CB-A8- <i>nnA</i>	A8	TB 1 or TB 2	2	<i>nn</i> = 06 6 ft (1.83 m)*
R2-CB-S8- <i>nnA</i>	S8	TB 1 or TB 2	2	
R2-CB-Q4- <i>nnA</i>	Q4	TB 1 or TB 2	2	
R2-CB-LC8- <i>nnA</i>	LC8	TB 1 or TB 2	2	
R2-CB-CA4- <i>nnA</i>	CA4	TB 1 or TB 2	2	
R2-CB-CV8- <i>nnA</i>	CV8	TB 1 or TB 2	2	<i>nn</i> = 12 12 ft (3.66 m)*
R2-CB-D24TB1- <i>nnA</i>	D24	TB1	1 of each cable assembly (2 total)	
R2-CB-D24TB2- <i>nnA</i>		TB2		
R2-CB-U14TB1- <i>nnA</i>	U14	TB1	1 of each cable assembly (2 total)	
R2-CB-U14TB2- <i>nnA</i>		TB2		

*Contact Delta for other lengths.

Refer to the individual datasheets for specifications on each cable assembly.

Part Numbering

R2-CB-m..m-*nnA*

RMC200 Cable

Module and Terminal Block

The module and terminal block (TB#) that the cable applies to. If no terminal block is specified, the cable applies to either terminal block on the module.

Codes for modules with identical cables for each terminal block:

A8, S8, Q4, LC8, CA4, CV8

Codes for modules with unique cables for each terminal block:

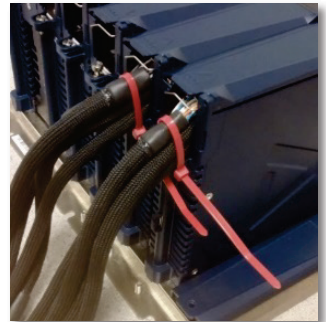
D24TB1, D24TB2, U14TB1, U14TB2

Length

Choose 6 foot (*nn* = 06) or 12 foot (*nn* = 12) cable. Custom lengths available per request.

Design Series

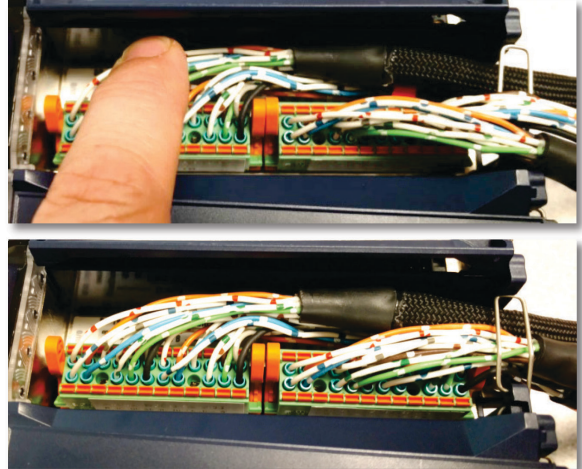
Currently **A** for all cables.



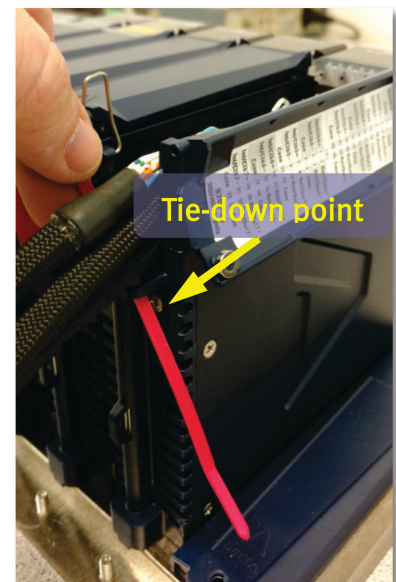
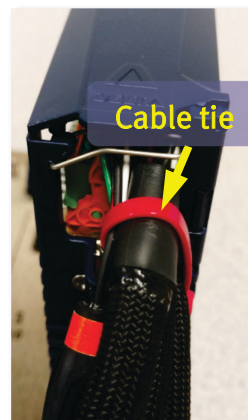


Installation Procedure

1. Insert the terminal block connectors for each cable assembly into the module, tucking upper cable into groove:



2. Use a cable tie to attach all cables exiting module to the tie down location shown. This ensures that module door will close properly. The cable tie should clamp onto the heat shrink tubing. Do not overtighten.



3. Relocate wires for certain features:
Some cables are pre-wired for a certain configuration that can be changed by the user via moving wires on the terminal block connector. For example, the A8 cable is pre-wired for voltage input, but inputs can individually be reconfigured for current by moving a wire on the terminal block. See the individual cable instructions for details.
4. Connect the pigtail ends to terminal blocks as required by the application. Delta recommends the use of ferrules.

Refer to the individual cable datasheets for cable pinouts and wiring instructions.